

WADI SOMA



SOMABAY





- 1. Mesca Residences
- 2. Baywest
- 3. Baywest Valley
- 4. Blanca
- 5. Mazeej Hotel / Residences
- 6. Baycentral
- 7. Marina Residences
- 8. Soma Breeze
- 9. Reef Town
- 10. Golf Townhouses
- 11. Wadi Jebal
- 12. Wadi Soma
- 13. Sholan Residences
- 14. Soma Coves
- 15. Golf Course Residences
- 16. Arc of Soma

- 17. [Unlabeled]
- 18. [Unlabeled]
- 19. [Unlabeled]
- 20. [Unlabeled]
- 21. [Unlabeled]
- 22. [Unlabeled]
- 23. [Unlabeled]
- 24. [Unlabeled]
- 25. [Unlabeled]
- 26. [Unlabeled]
- 27. [Unlabeled]
- 28. [Unlabeled]
- 29. [Unlabeled]
- 30. [Unlabeled]
- 31. [Unlabeled]
- 32. [Unlabeled]
- 33. [Unlabeled]
- 34. [Unlabeled]
- 35. [Unlabeled]
- 36. [Unlabeled]
- 37. [Unlabeled]
- 38. [Unlabeled]
- 39. [Unlabeled]
- 40. [Unlabeled]
- 41. [Unlabeled]
- 42. [Unlabeled]
- 43. [Unlabeled]
- 44. [Unlabeled]
- 45. [Unlabeled]
- 46. [Unlabeled]
- 47. [Unlabeled]
- 48. [Unlabeled]

Mother nature was unbelievably generous with a sun-kissed peninsula floating on the red sea's gleaming coastline. Here is where exquisite ribbons of sand are backed by lush green golf views and lapped by turquoise waters sleeping at the foot of red mountain peaks. Captivating beneath the water as above, somabay is one of the few places on earth that does beach-front luxury so effortlessly.



An aerial photograph of the Wadi Soma resort, showing a large, developed area with buildings, roads, and green spaces, surrounded by a blue sea. A yellow arrow points to a specific location on the coast. The text 'WADI SOMA' is visible in the upper right corner, with a large 'W' logo above it.


WADI SOMA

Nestled on 10 million square meters of lush land, life at somabay is where fantasy-scapes follow you wherever you go and sundrenched activities take infinite elevating forms. Expertly conceived to evoke a laid-back European feel, every aspect of the heavenly development is sympathetic to nature, painting colorful experiences around its lively marina and soulsoothing jetty, so you can take recharge or decelerate. Home to 5 luxury resort hotels and a signature portfolio of residential properties, somabay's one-of-a-kind settings with its full complement of premium amenities are the stage for incomparable experiences alongside friends and family.

Inspired by the 15th century Japanese philosophy “wabi sabi”, wadi soma is harmoniously designed to break-free from modern dominant trends that heavily rely on lavishness, as well as over-ornamentation to instead glorify the idea of finding real beauty in imperfection.

The destination grounds residents to the site’s natural elements, allowing them to forge a deep connection with mother earth while enjoying the simple pleasures of life, raw, real but most importantly, authentically to enrich every aspect of Daily life.





Wabi-sabi is a guiding principle of existence that focuses on accepting things as they are, rather than spending time wishing for something better. It is the power to live in the Now, appreciate beauty in its most authentic form while realizing that life is purely a reflection of nature.

W A D I S O M A



The distinctive topography of Somabay is the best inspiration an architect can ever find. The architecture at Wadi Soma flawlessly mimics and blends into this very special location. The signature lodges are inspired by the sharp prism silhouette of Safaga Mountain whilst the stunning courtyards are inspired by the scattered rock formations in the Soma Desert. The front villas are embedded into the rocks just as the coves are distinctive to this peninsula beach.

As the architects of Wadi Soma, we tried to be part of this nature through the geometry, materials, and colors. We wanted to create a project worthy of this holistic site.



a letter from the architect

Raef Fahmi

A handwritten signature in dark ink, consisting of stylized, overlapping letters that appear to be 'R' and 'F'.

Oculus designs is a leading interior design company with a team of top professionals delivering mega projects with uncompromising high quality designs & a strong technical team on board. Their commitment to excellence is unparalleled.

OCULUS[®]

Raef Fahmi • Sally Kamel



103 104 105 106 107 108 109 110 111 112 113 114 115 116 117 118 119 120 121 122 123 124 125 126 127 128 129 130 131 132 133 134 135 136 137 138 139 140 141 142 143

201 202 203 204 205 206 207 208 209 210 211 212 213 214 215 216 217 218 219 220 221 222 223 224 225 226 227 228 229 230 231 232 233 234 235 236 237 238 239 240 241 242 243 244 245 246 247 248 249 250 251 252 253 254 255 256 257 258 259 260 261 262 263 264 265 266 267 268 269 270 271 272 273 274 275 276 277 278 279 280 281 282 283 284 285 286 287 288 289 290 291 292 293 294 295 296 297 298 299 300 301 302 303 304 305 306 307 308 309 310 311 312 313 314 315 316 317 318 319 320 321 322 323 324 325 326 327 328 329 330 331 332 333 334 335 336 337 338 339 340 341 342 343 344 345 346 347 348 349 350 351 352 353 354 355 356 357 358 359 360 361 362 363 364 365 366 367 368 369 370 371 372 373 374 375 376 377 378 379 380 381 382 383 384 385 386 387 388 389 390 391 392 393 394 395 396 397 398 399 400 401 402 403 404 405 406 407 408 409 410 411 412

A
B
C
D
E
F
G
H

MASTER PLAN - TYPES



- SEA FRONT CLIFF VILLA A
- SEA FRONT CLIFF VILLA B
- PATIO
- GOLF VILLAS
- LODGE

raeffahmi
architects

OCULUS[®]
Real Estate - Real Estate

* The master plan is provided solely for the purpose of providing an impression of wadi soma project, as well as the approximate location and orientation of units. The master plan is not a legally binding obligation or warranty.

MASTER PLAN - LEVELS



- + 07.00
- + 11.00
- + 15.00
- + 19.00
- + 22.75
- + 24.75
- + 26.75
- + 11.00 + 19.00

raeffahmi.
architects

OCULUS
Real Estate - Real Vision

* The levels displayed are the units' entrance levels, especially lodges as levels shown are for the living room, bedroom levels are lower for type B and C.



Street

Type B

Private Pool

Landscape



Pedestrian
Path

Patios

Street
Level +17.5

Patios

Landscape

Patios

Patios

Landscape

Street
Level +13.5

SEA FRONT CLIFF VILLA A



Disclaimer:

All room dimensions are measured to structural elements and exclude wall finishes and construction tolerances.
 All dimensions have been provided by our consultant architects.
 All materials, dimensions and drawings are approximate, information subject to change without notice.
 Actual villa area may vary from stated area. Drawings not to scale.
 The developer reserves the right to make revisions.
 Any colored images shown are indicative only, actual colors may vary depending on the scanning and printing methods.
 Floor plans may be mirrored depending on location on master plan.
 In the case of garden level option. Stair and terrace details may vary.



SEA FRONT CLIFF VILLA A

LIVING AREA	7.8 X 5.8 m
KITCHEN	4 X 3.6 m
DINING AREA	4 X 5.8 m
MASTER BEDROOM	5.9 X 5.8 m
DRESSING	4.5 X 2.7 m
MASTER BATH	4.5 X 3 m
BEDROOM 1	4.6 X 3.8 m
BEDROOM 2	4.6 X 3.9 m
BEDROOM 3	4.6 X 3.9 m
TOTAL BUA	312.45 sqm

* layouts & dimensions are subject to change.



SEA FRONT CLIFF VILLA A



EXTERIOR SHOTS

SEA FRONT CLIFF VILLA A



EXTERIOR SHOTS

SEA FRONT CLIFF VILLA A



EXTERIOR SHOTS

SEA FRONT CLIFF VILLA A



INTERIOR SHOTS

SEA FRONT CLIFF VILLA A



INTERIOR SHOTS

SEA FRONT CLIFF VILLA A



INTERIOR SHOTS

SEA FRONT CLIFF VILLA A



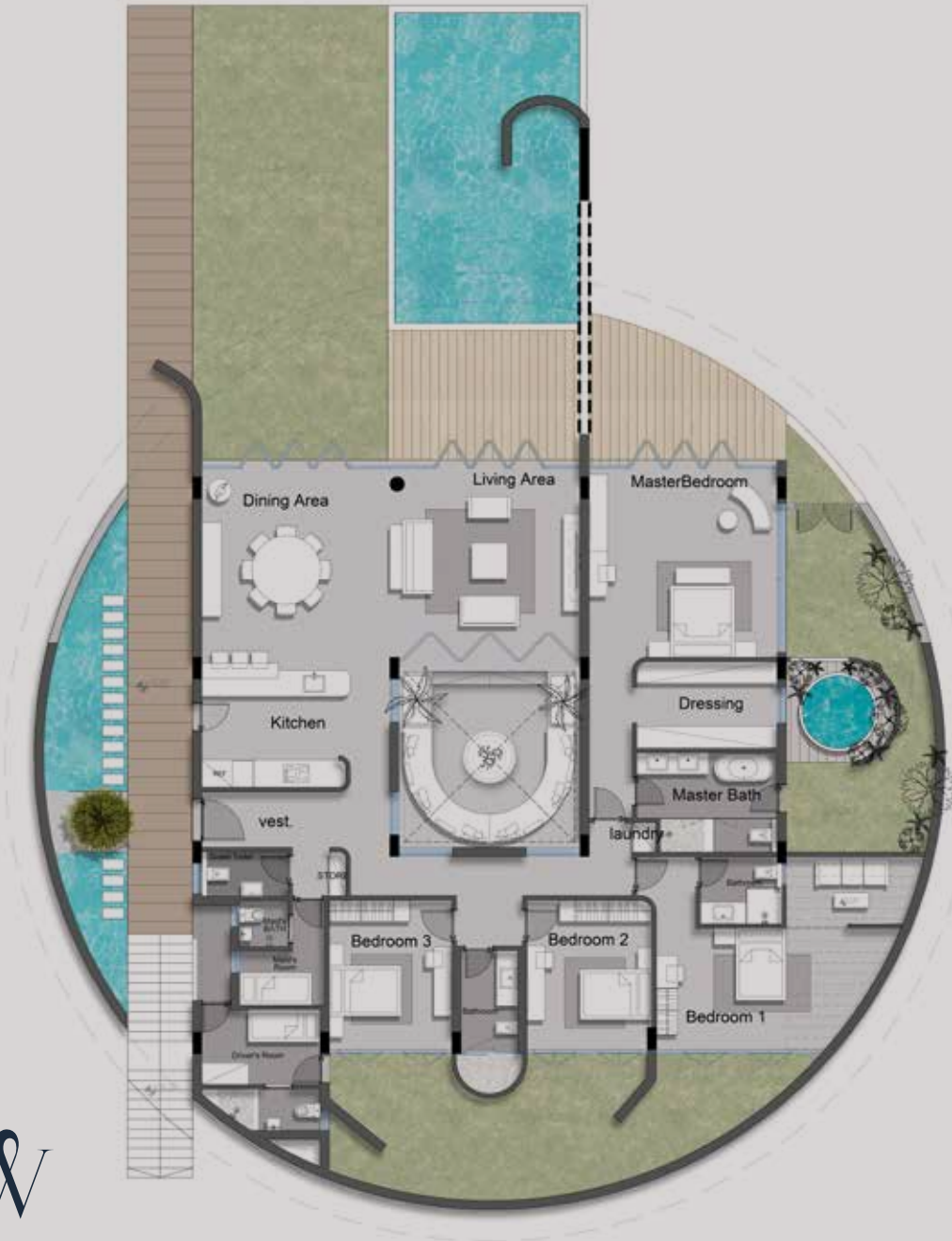
INTERIOR SHOTS

SEA FRONT CLIFF VILLA B



Disclaimer:

All room dimensions are measured to structural elements and exclude wall finishes and construction tolerances.
All dimensions have been provided by our consultant architects.
All materials, dimensions and drawings are approximate, information subject to change without notice.
Actual villa area may vary from stated area. Drawings not to scale.
The developer reserves the right to make revisions.
Any colored images shown are indicative only, actual colors may vary depending on the scanning and printing methods.
Floor plans may be mirrored depending on location on master plan.
In the case of garden level option, stair and terrace details may vary.



SEA FRONT CLIFF VILLA B

LIVING AREA	7 X 5.2 m
KITCHEN	3.6 X 3.4 m
DINING AREA	4.2 X 3.5 m
MASTER BEDROOM	5.2 X 5.2 m
DRESSING	3.9 X 2.4 m
MASTER BATH	3.9 X 2.8 m
BEDROOM 1	3.7 X 3.4 m
BEDROOM 2	4 X 3.4 m
BEDROOM 3	4 X 3.4 m
TOTAL BUA	255.36 sq. m

* layouts & dimensions are subject to change.



SEA FRONT CLIFF VILLA B



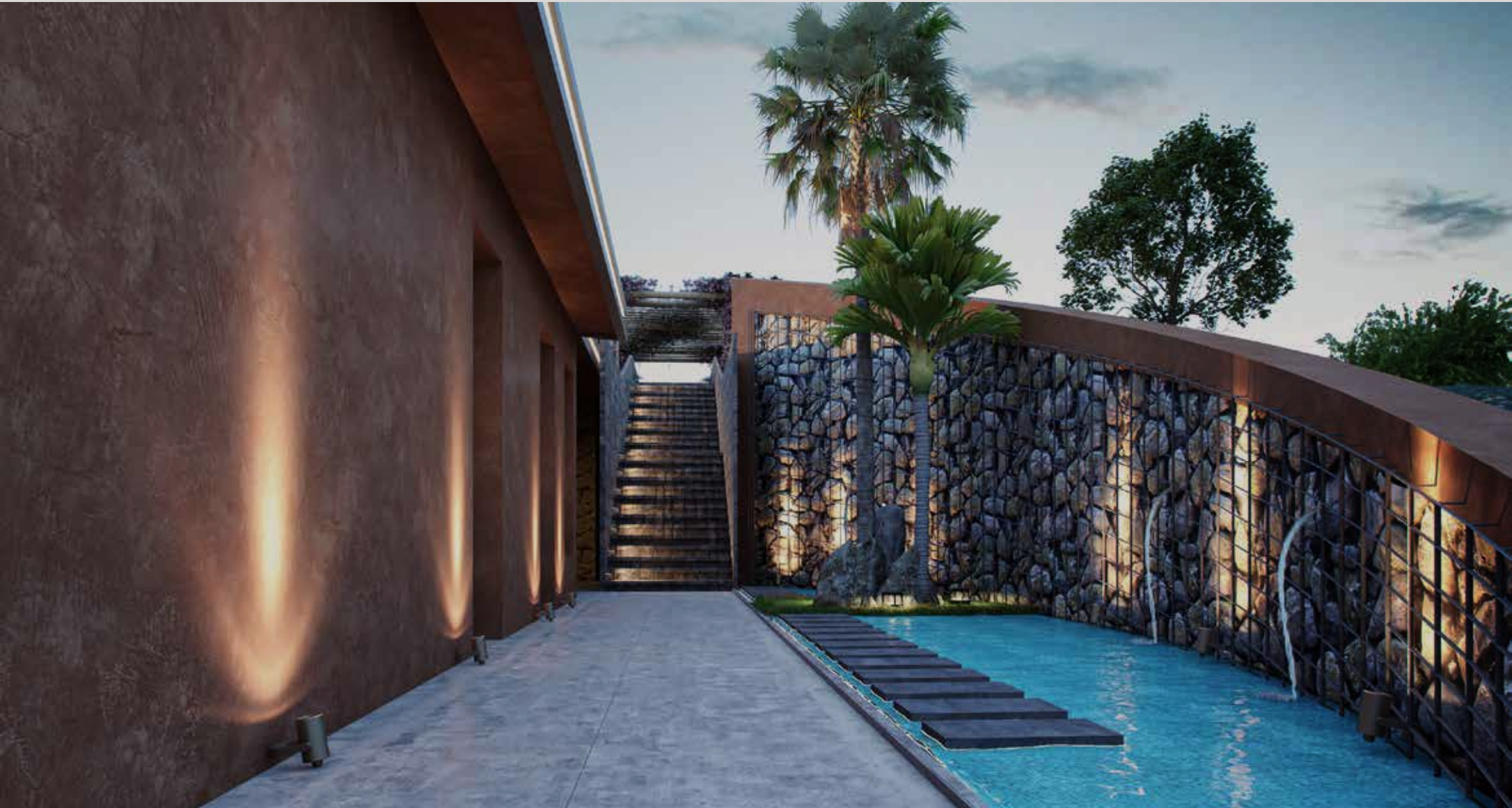
EXTERIOR SHOTS

SEA FRONT CLIFF VILLA B



EXTERIOR SHOTS

SEA FRONT CLIFF VILLA B



EXTERIOR SHOTS

SEA FRONT CLIFF VILLA B



INTERIOR SHOTS

SEA FRONT CLIFF VILLA B



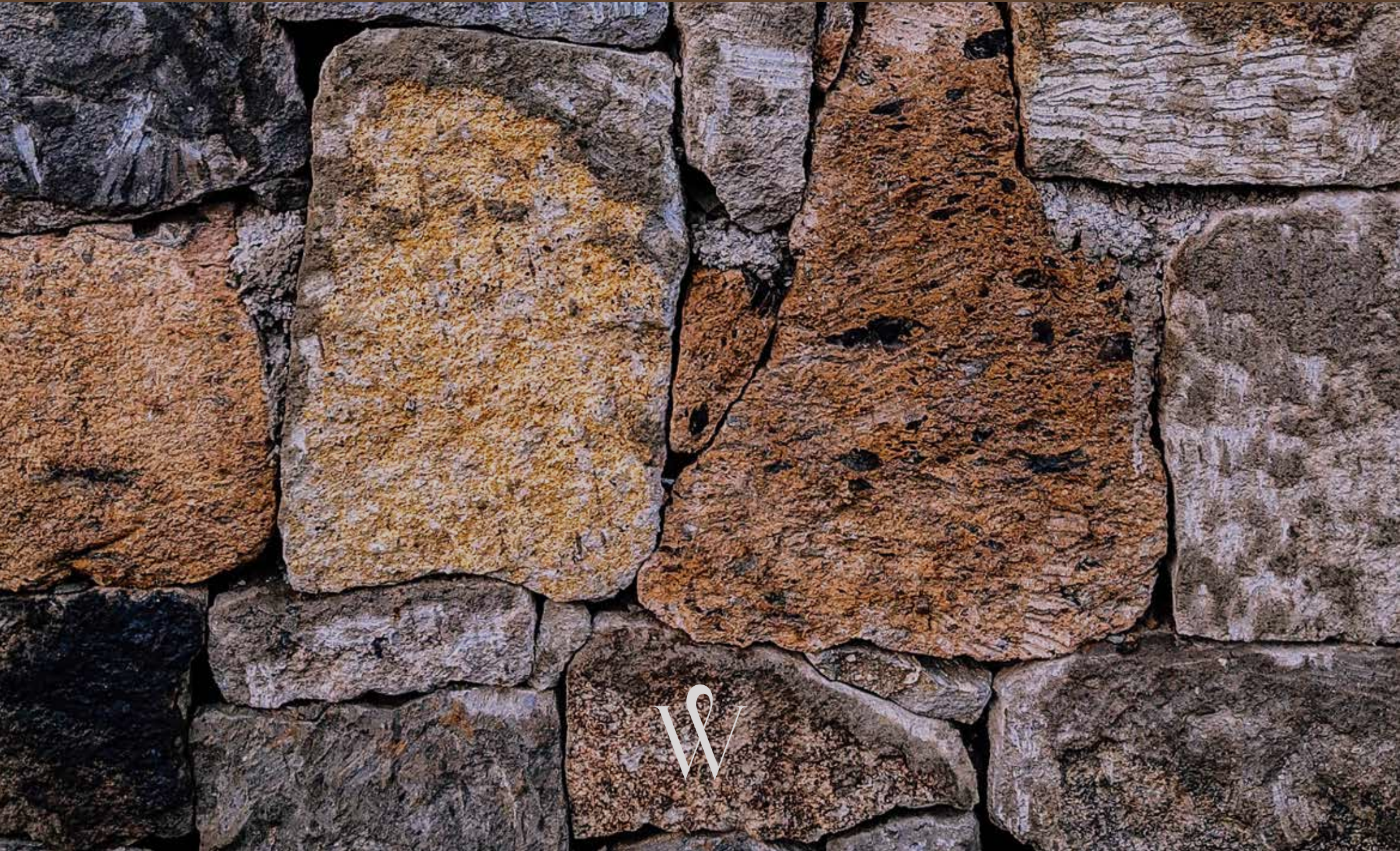
INTERIOR SHOTS

SEA FRONT CLIFF VILLA B



INTERIOR SHOTS

PATIO



W



Disclaimer:

All room dimensions are measured to structural elements and exclude wall finishes and construction tolerances.
 All dimensions have been provided by our consultant architects.
 All materials, dimensions and drawings are approximate, information subject to change without notice.
 Actual villa area may vary from stated area. Drawings not to scale.
 The developer reserves the right to make revisions.
 Any colored images shown are indicative only, actual colors may vary depending on the scanning and printing methods.
 Floor plans may be mirrored depending on location on master plan.
 In the case of garden level option. Stair and terrace details may vary.

PATIO

LIVING AREA	4.8 X 3.5 m
KITCHEN	3.8 X 2.4 m
DINING AREA	4.8 X 3.8 m
MASTER BEDROOM	3.6 X 3.6 m
DRESSING	2.2 X 1.7 m
MASTER BATH	3.1 X 1.8 m
BEDROOM 1	3.7 X 3.6 m
BEDROOM 2	3.6 X 3.6 m
TOTAL BUA	188.21 sq.m

* layouts & dimensions are subject to change.



PATIO



EXTERIOR SHOTS

PATIO



EXTERIOR SHOTS

PATIO



EXTERIOR SHOTS

PATIO



INTERIOR SHOTS

PATIO



INTERIOR SHOTS

LODGE



5 A GROUND

Level shown in living room is top level.



LODGE

LIVING AREA	5.7 X 4.7 m
KITCHEN	3.5 X 2.4 m
DINING AREA	4.5 X 2.9 m
BEDROOM 1	4.7 X 3.6 m
BATH 1	2.8 X 1.8 m
BEDROOM 2	4.7 X 3.5 m
BATH 2	2.45 X 1.6 m
TOTAL BUA	200 sq. m

EXTRA ROOM



* layouts & dimensions are subject to change.

Disclaimer:

All room dimensions are measured to structural elements and exclude wall finishes and construction tolerances.
 All dimensions have been provided by our consultant architects.
 All materials, dimensions and drawings are approximate, information subject to change without notice.
 Actual villa area may vary from stated area. Drawings not to scale.
 The developer reserves the right to make revisions.
 Any colored images shown are indicative only, actual colors may vary depending on the scanning and printing methods.
 Floor plans may be mirrored depending on location on master plan.
 In the case of garden level option, stair and terrace details may vary.



5 A FIRST

Level shown in bedrooms room is a level higher than top level.



LODGE

EXTRA ROOM



LIVING AREA	5.7 X 4.7 m
KITCHEN	3.5 X 2.4 m
DINING AREA	4.5 X 2.9 m
BEDROOM 1	4.7 X 3.6 m
BATH 1	2.8 X 1.8 m
BEDROOM 2	4.7 X 3.5 m
BATH 2	2.45 X 1.6 m
TOTAL BUA	200 s.q.m

Disclaimer:

All room dimensions are measured to structural elements and exclude wall finishes and construction tolerances.
All dimensions have been provided by our consultant architects.
All materials, dimensions and drawings are approximate, information subject to change without notice.
Actual villa area may vary from stated area. Drawings not to scale.
The developer reserves the right to make revisions.
Any colored images shown are indicative only, actual colors may vary depending on the scanning and printing methods.
Floor plans may be mirrored depending on location on master plan.
In the case of garden level option, stair and terrace details may vary.

* layouts & dimensions are subject to change.



LODGE



EXTERIOR SHOTS

5 B GROUND

Level shown in living room is top level.



LODGE

LIVING AREA	5.4 X 5 m
KITCHEN	3.4 X 3.4 m
DINING AREA	3.7 X 2.5 m
BEDROOM 1	5.4 X 3.4 m
BATH 1	2.8 X 1.8 m
BEDROOM 2	4.7 X 3.5 m
BATH 2	2.7 X 1.7 m
TOTAL BUA	142 sq. m

Disclaimer:

All room dimensions are measured to structural elements and exclude wall finishes and construction tolerances.
All dimensions have been provided by our consultant architects.
All materials, dimensions and drawings are approximate, information subject to change without notice.
Actual villa area may vary from stated area. Drawings not to scale.
The developer reserves the right to make revisions.
Any colored imaged shown are indicative only, actual colors may vary depending on the scanning and printing methods.
Floor plans may be mirrored depending on location on master plan.
In the case of garden level option. Stair and terrace details may vary.



* layouts & dimensions are subject to change.

5 B FIRST

Level shown in bedrooms room is a level lower than top level.



LODGE

LIVING AREA	5.4 X 5 m
KITCHEN	3.4 X 3.4 m
DINING AREA	3.7 X 2.5 m
BEDROOM 1	5.4 X 3.4 m
BATH 1	2.8 X 1.8 m
BEDROOM 2	4.7 X 3.5 m
BATH 2	2.7 X 1.7 m
TOTAL BUA	142 sq. m

Disclaimer:

All room dimensions are measured to structural elements and exclude wall finishes and construction tolerances.
All dimensions have been provided by our consultant architects.
All materials, dimensions and drawings are approximate, information subject to change without notice.
Actual villa area may vary from stated area. Drawings not to scale.
The developer reserves the right to make revisions.
Any colored imaged shown are indicative only, actual colors may vary depending on the scanning and printing methods.
Floor plans may be mirrored depending on location on master plan.
In the case of garden level option. Stair and terrace details may vary.



* layouts & dimensions are subject to change.

LODGE



EXTERIOR SHOTS

5 C GROUND

Level shown in living room is top level.



LODGE

LIVING AREA	5.6 X 4.7 m
KITCHEN	3.5 X 2.4 m
DINING AREA	4 X 2.7 m
BEDROOM 1	4.7 X 3.6 m
BATH 1	2.8 X 1.8 m
BEDROOM 2	4.7 X 3.5 m
BATH 2	2.4 X 1.7 m
TOTAL BUA	195.7 sq. m

EXTRA ROOM



* layouts & dimensions are subject to change.

Disclaimer:

All room dimensions are measured to structural elements and exclude wall finishes and construction tolerances.
All dimensions have been provided by our consultant architects.
All materials, dimensions and drawings are approximate, information subject to change without notice.
Actual villa area may vary from stated area. Drawings not to scale.
The developer reserves the right to make revisions.
Any colored images shown are indicative only, actual colors may vary depending on the scanning and printing methods.
Floor plans may be mirrored depending on location on master plan.
In the case of garden level option, stair and terrace details may vary.



5 C FIRST

Level shown in bedrooms room is a level lower than top level.



LODGE

LIVING AREA	5.6 X 4.7 m
KITCHEN	3.5 X 2.4 m
DINING AREA	4 X 2.7 m
BEDROOM 1	4.7 X 3.6 m
BATH 1	2.8 X 1.8 m
BEDROOM 2	4.7 X 3.5 m
BATH 2	2.4 X 1.7 m
TOTAL BUA	195.7 sq.m

EXTRA ROOM



* layouts & dimensions are subject to change.

Disclaimer:

All room dimensions are measured to structural elements and exclude wall finishes and construction tolerances.
 All dimensions have been provided by our consultant architects.
 All materials, dimensions and drawings are approximate, information subject to change without notice.
 Actual villa area may vary from stated area. Drawings not to scale.
 The developer reserves the right to make revisions.
 Any colored images shown are indicative only, actual colors may vary depending on the scanning and printing methods.
 Floor plans may be mirrored depending on location on master plan.
 In the case of garden level option. Stair and terrace details may vary.



LODGE



EXTERIOR SHOTS

L O D G E



I N T E R I O R S H O T S

LODGE



INTERIOR SHOTS

GOLF VILLAS



W

±0.00
Rd M.



Disclaimer:
 All room dimensions are measured to structural elements and exclude wall finishes and construction tolerances.
 All dimensions have been provided by our consultant architects.
 All materials, dimensions and drawings are approximate, information subject to change without notice.
 Actual villa area may vary from stated area. Drawings not to scale.
 The developer reserves the right to make revisions.
 Any colored images shown are indicative only, actual colors may vary depending on the scanning and printing methods.
 Floor plans may be mirrored depending on location on master plan.
 In the case of garden level option. Stair and terrace details may vary.

GOLF VILLAS

LIVING AREA	5.8 X 5.6 m
KITCHEN	3.9 X 2.7 m
DINING AREA	3.5 X 5.6 m
MASTER BEDROOM	5.2 X 3.8 m
DRESSING	4 X 1.9 m
MASTER BATH	4 X 1.9 m
BEDROOM 1	3.9 X 4.8 m
BEDROOM 2	3.9 X 4.1 m
TOTAL BUA	177 sq. m

* layouts & dimensions are subject to change.



GOLF VILLAS



EXTERIOR SHOTS

GOLF VILLAS



EXTERIOR SHOTS

GOLF VILLAS



EXTERIOR SHOTS

GOLF VILLAS



EXTERIOR SHOTS

GOLF VILLAS



INTERIOR SHOTS

GOLF VILLAS



INTERIOR SHOTS

FOLLOW THE SUN, ALL YEAR LONG

Start your day by teeing off at SOMABAY Championship Golf Course then unwind at the award winning Cascades Spa and Thalasso and allow the healing powers of the Red Sea to restore balance to your body and soul.

For the more adventurous, ORCA Dive Centre invites you to uncover the untapped wonders of Egypt's marine life at the site's colorful House Reef. Kitesurfing lovers can spend a serene afternoon gliding across flat waters at 7Bft –one of the top 3 kitesurfing spots in the world- followed by a world-class dining experience at any of the destination's signature restaurants. Blessed with dry desert winds, low humidity and a front-row seat on immaculate sea views, Somabay dictates an exciting itinerary for the whole family, transforming your everyday reality into a waking dream.

- 10 million sqm of incomparable experiences – all under one roof, all within reach
- 45 minutes from Hurghada International Airport
- 5 hours by car from Cairo
- 4 hours by plane from Central Europe
- 2 hours by car from Luxor and the Nile Valley

A diver is seen in the center of the frame, illuminated by a bright light from their flashlight. The diver is surrounded by a vast field of coral and numerous small fish. The water is a deep, clear blue, and the overall scene is a vibrant underwater ecosystem.

ORCA DIVE CENTER

Explore the Red Sea's underwater wonders with top professionals at the site's unique House Reef.

SOMABAY CHAMPIONSHIP GOLF COURSE

Tee off at The Cascades 18 hole par 72
Championship Golf Course designed by legendary
golfer Gary Player.



An aerial photograph of a vast, turquoise body of water under a clear blue sky. A kitesurfer is visible in the lower-left quadrant, leaving a white wake. A large, white, crescent-shaped kite is suspended in the air above the water. In the far distance, a coastline with buildings and a range of mountains are visible under a bright sky.

7 B F T THE KITE HOUSE

Glide on idyllic flat waters & experience the best elements of the sun, sea and wind in one of the top 3 kitesurfing spots in the world.



THE CASCADES & THALASSO

Embark on a rejuvenating journey & uncover the most exquisite spa experience in the Middle East.

THE MARINA

Experience an abundant variety of entertainment activities & world-class culinary adventures perfected by panoramic views & exceptional service on par with international escapes.



D I N E - A R O U N D .

Somabay is home to a range of different restaurants serving tastes from around the world.

Bringing you an exquisite dining experience and a wider choice of dining venues. We've created a "dine around" concept that allows you to explore the different eateries within the selected participating hotels. Whether you are on half board or all-inclusive basis you have the privilege to transfer your dinner from your respective hotel to participating restaurants.

This is redeemable against vouchers, valued as per your corresponding hotel meal plan rate, available for exchange on daily basis. If the meal exceeds the voucher value you are kindly requested to settle the difference. Advance reservation is required.

This option is subject to the participating hotels availability. Please contact the guest relations desk to collect the 'Dine Around' voucher and to know more about Terms & Conditions. Explore the world's finest cuisines in some of Somabay's most picturesque settings

stayr

Buy life home rentals

Leave your House in Good Hands

Our hospitality professionals with international experience in luxury branded properties will be taking care of your home and will be available around the clock to make sure everything goes according to plan.

Invest in a Relationship of Trust

We invest all our efforts in marketing your house while determining the best rental price based on meticulous market research. We personalize each of our bookings according to your needs, guaranteeing a hassle-free home rental experience where you don't need to show up at every tenant's back and because we'll do it for you.

Enter Into a Signature Collection

Stayr invites you to enter its signature collection where the exceptional is found everywhere. Each of our listed homes boasts a unique personality of its own, as well as a one-of-a-kind view to cater to every holiday mood.



SOMABAY PROPERTY RESALE

Our Property Resale Division is a dedicated arm of leading professionals who enable you to make the most out of our unit's value by selling it at the best market price, guaranteeing the highest return on investment.