



SEA-FRONT DESIGNER VILLAS

# Nautilus



SOMABAY.  
GLISTENING ON AN IDYLIC  
PENINSULA, SOMABAY IS THE  
ONLY PARADISE GETAWAY  
IN THE RED SEA, PROMISING  
PANORAMIC SUNSETS.

Famed for its clear sapphire waters, white sandy beaches and intricate tapestry of coral reefs, Somabay is in short; exclusivity by mere topography, as well as 10 million square meters of incomparable experiences inspiring life, wherever the sky meets the sea.





NAUTILUS / SOMABAY

WELCOME TO



BAY LIVING





- 1. Mesca Residences
- 2. Baywest
- 3. Baywest Valley
- 4. Blanca
- 5. Mazeej Hotel / Residences
- 6. Baycentral
- 7. Marina Residences
- 8. Soma Breeze

- 9. Reef Town
- 10. Golf Townhouses
- 11. Wadi Jebal
- 12. Wadi Soma
- 13. Sholan Residences
- 14. Soma Coves
- 15. Golf Course Residences
- 16. Arc of Soma



BAY CENTRAL

YOU & ALL  
SHADES  
OF TRANQUIL  
BLUE.



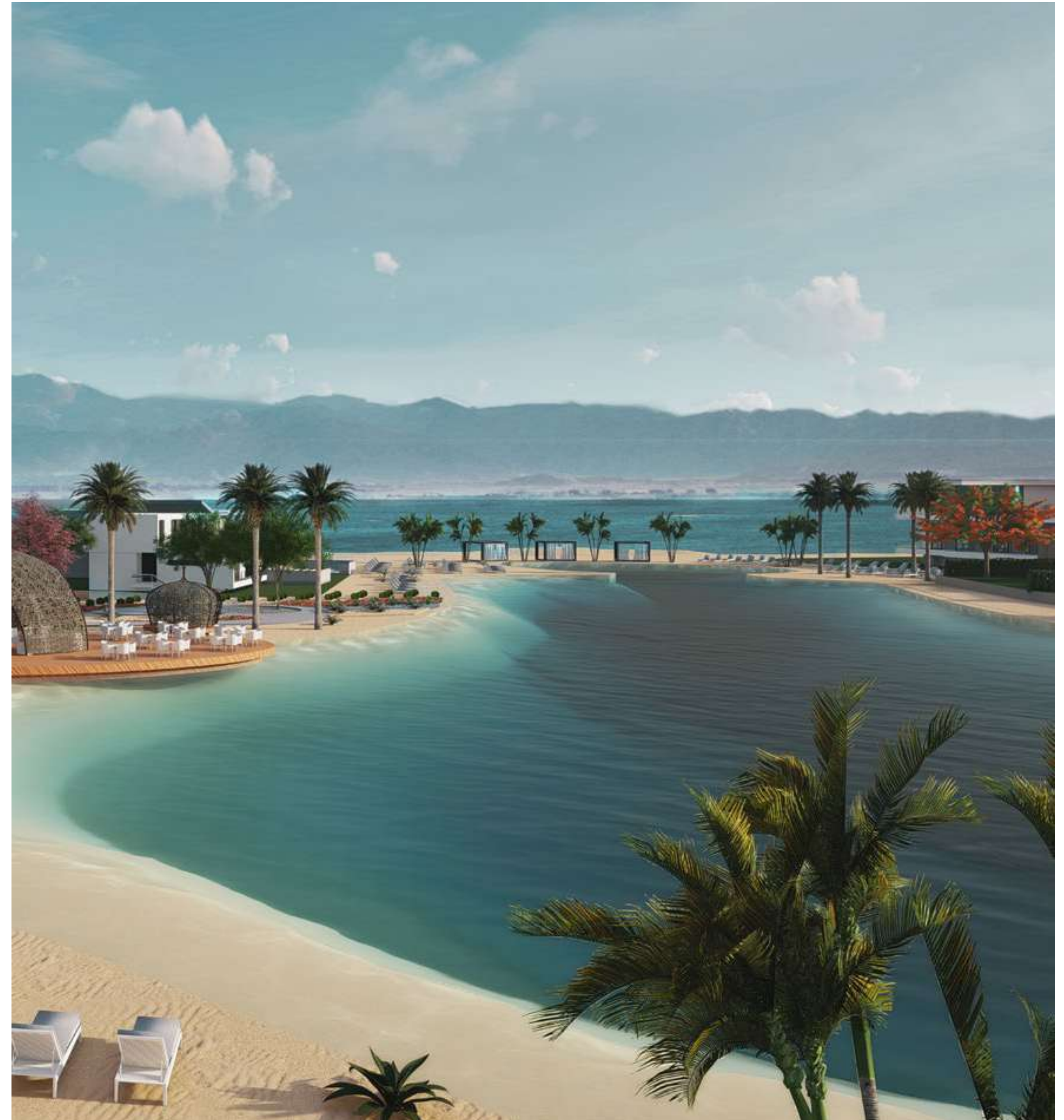


## EXPERIENCE THE BEST OF BOTH WORLDS.

Bay Central—the most exclusive and premium spot in Somabay, oozing with inescapable elegance and class.

Masterplanned to surround communities with a unique air of sophistication and grandeur, every aspect of Bay Central seamlessly integrates with the natural environment to evoke timeless

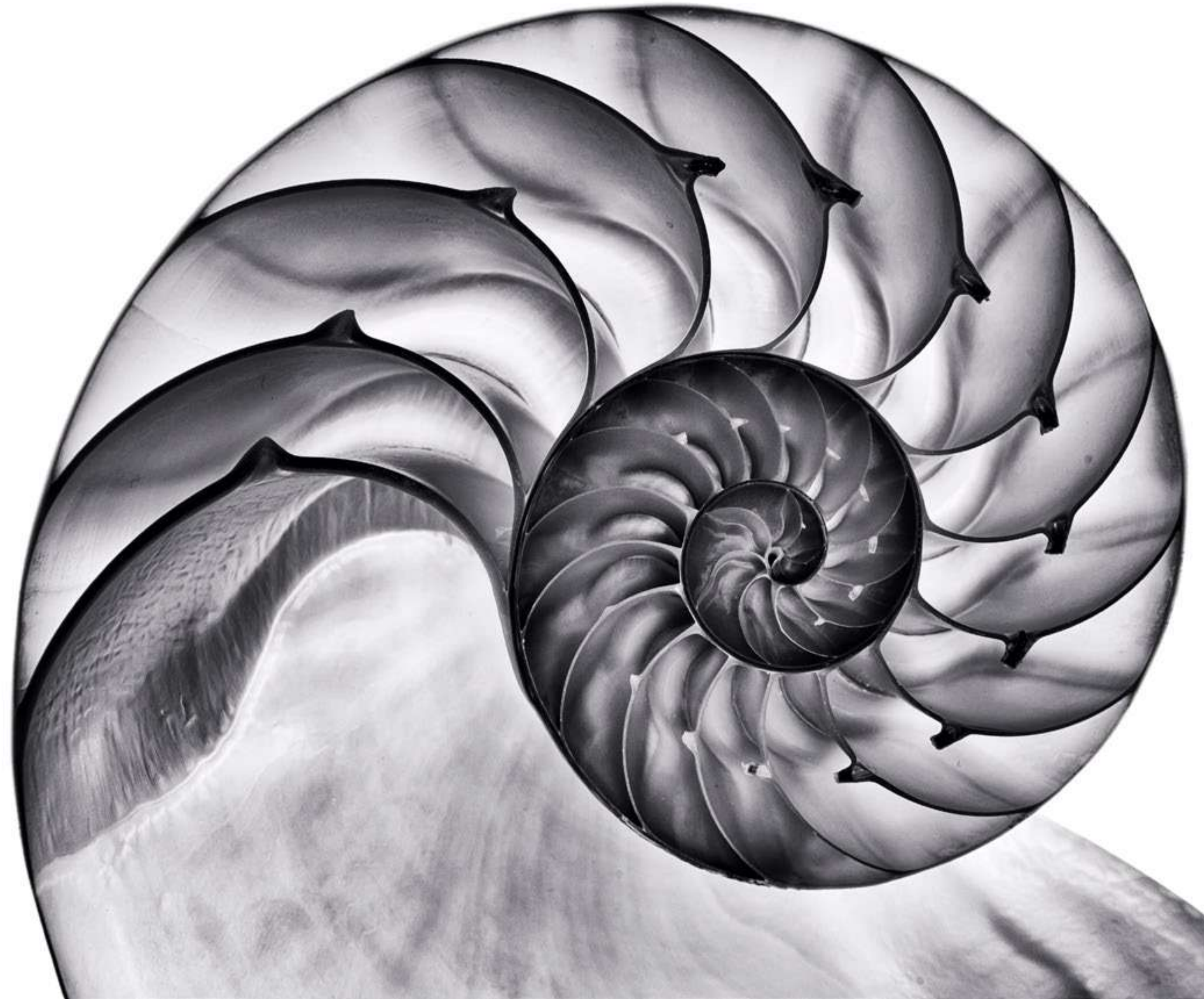
sentiments of calm while lying at close proximity to Somabay's spirited Marina for authentic experiences, second to none. From select F&B concepts, leisurely moments to retail luxuries of all sorts, Bay Central allows you to tap into a laid back rhythm of life, powered by non stop entertainment, few steps away.





Introducing Nautilus

SOMABAY'S  
ULTIMATE OFFERING  
CROWNING THE  
HELM OF BAY  
CENTRAL





EXCLUSIVITY

LUXURY  
THAT IS  
FELT, HEARD  
AND SEEN.





# BESPOKE ELEGANCE.

Intricate luxury comes alive around every corner in Nautilus. The select address captures fine finishing details and bespoke fittings to create a sophisticated space for relaxing that is both refined and design-driven.

Incorporating sumptuous materials, balanced textures and rich elements, wherever you turn promise a truly elevated living experience that magnifies bay-front views while revolutionizing the idea of immersive luxury at every touchpoint.





A woman is shown from the chest up, wearing a white dress with a thin strap. She is partially covered by a white sheet that is draped over her. The background is a bright, hazy sky. The text is overlaid on the left side of the image.

PRIVACY

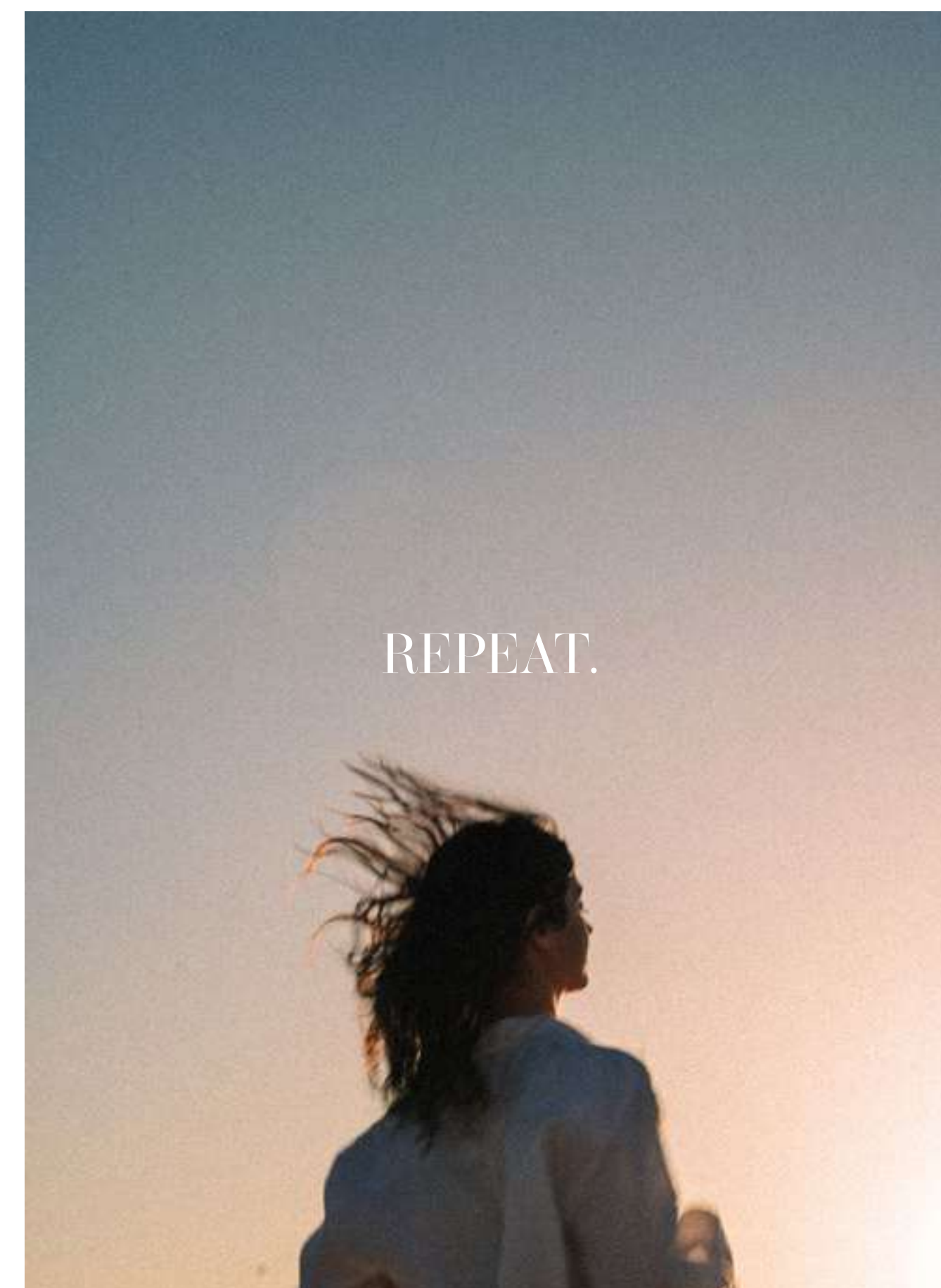
BE  
SECLUDED,  
SHOULD  
YOU WISH.



Bathe.



Breathe.



REPEAT.



Nautilus Private Beach

# A TRANQUIL ESCAPE. NAUTILUS SERENITY BEACH.



Experience the ultimate in relaxation and serenity at Nautilus Beach; a private bay enclave, lined with day beds and wooden decks reserved solely for residents to escape.

Planned for those wishing to decelerate or simply enjoy a refreshing dip in crystal clear waters,

the beach boasts an inviting library promising a good read, as well as a barbecue area for friends to gather up and indulge in a good meal.



DESIGN

AESTHETICS  
THAT  
EXPRESS  
WHAT WORDS  
CAN NOT.



Nautilus  
A MASTERPIECE  
BY DESIGN.

Boasting an innovative elevation technique that maximizes open views on the tranquil bay, as well as the Red's mountainous terrain, Nautilus is the brainchild of award-winning Saota Architecture and Design firm, envisaged as a front-row seat on Somabay's inspirational beauty.

Gracefully poised in the heart of Bay Central to re-imagine the concept of balance from an aesthetic perspective,

Nautilus transforms every home into a bespoke amphitheater of sky and sea while immersing residents in exceptional details that take luxury to a whole new level. From harmonious lighting, signature hardscape to a private beach and lush landscapes, Nautilus promises a naturally-inspired living experience where impeccable details speak volumes.





IMPECCABLE DETAILS  
PERFECTING THE BIGGER  
PICTURE.

A sustainable masterpiece amplifying bay breeze magical landscapes & captivating scenery. Every aspect of Nautilus has been carefully planned to create a comfortable living experience in perfect harmony with Somabay's natural surroundings. The development's unique orientation sets it as a year-round livable destination, welcoming fresh bay breeze and

healthy air circulation into every home while opening onto captivating sunsets right before your home. Smartly oriented west to open onto the widest point of the bay, Nautilus is a naturally inviting gem, offering a sustainable design model that capitalizes on every natural force for your own benefit.





# NAUTILUS SITE PLAN.

- Nautilus Grand
- Nautilus Prime
- Nautilus Privé
- Nautilus Signature







# VINTAGE QUALITY PRINTS

NAUTILUS GRAND  
NAUTILUS PRIVÉ  
NAUTILUS PRIME  
NAUTILUS SIGNATURE

NAUTILUS / SOMABAY





# Nautilus Grand



# Nautilus Grand Villa.

**Disclaimer** 1. Drawings are not to scale. 2. The architectural details, dimensions and area in this plan are based on Schematic Design information only, and final As-Built conditions may vary. 3. All units are sold as unfurnished apartments, without furniture and furnishings, without white goods provisions, etc. 4. All images used are for illustrative purposes only and do not represent the actual size, features, specifications, fittings, and furnishings. 5. Somabay reserves the right to make revisions/alterations, at its absolute discretion, and without liability.





# Nautilus Grand Villa.

**Disclaimer** 1. Drawings are not to scale. 2. The architectural details, dimensions and area in this plan are based on Schematic Design information only, and final As-Built conditions may vary. 3. All units are sold as unfurnished apartments, without furniture and furnishings, without white goods provisions, etc. 4. All images used are for illustrative purposes only and do not represent the actual size, features, specifications, fittings, and furnishings. 5. Somabay reserves the right to make revisions/alterations, at its absolute discretion, and without liability.





# Nautilus Grand Villa.

**Disclaimer** 1. Drawings are not to scale. 2. The architectural details, dimensions and area in this plan are based on Schematic Design information only, and final As-Built conditions may vary. 3. All units are sold as unfurnished apartments, without furniture and furnishings, without white goods provisions, etc. 4. All images used are for illustrative purposes only and do not represent the actual size, features, specifications, fittings, and furnishings. 5. Somabay reserves the right to make revisions/alterations, at its absolute discretion, and without liability.







Nautilus Grand  
Villa.

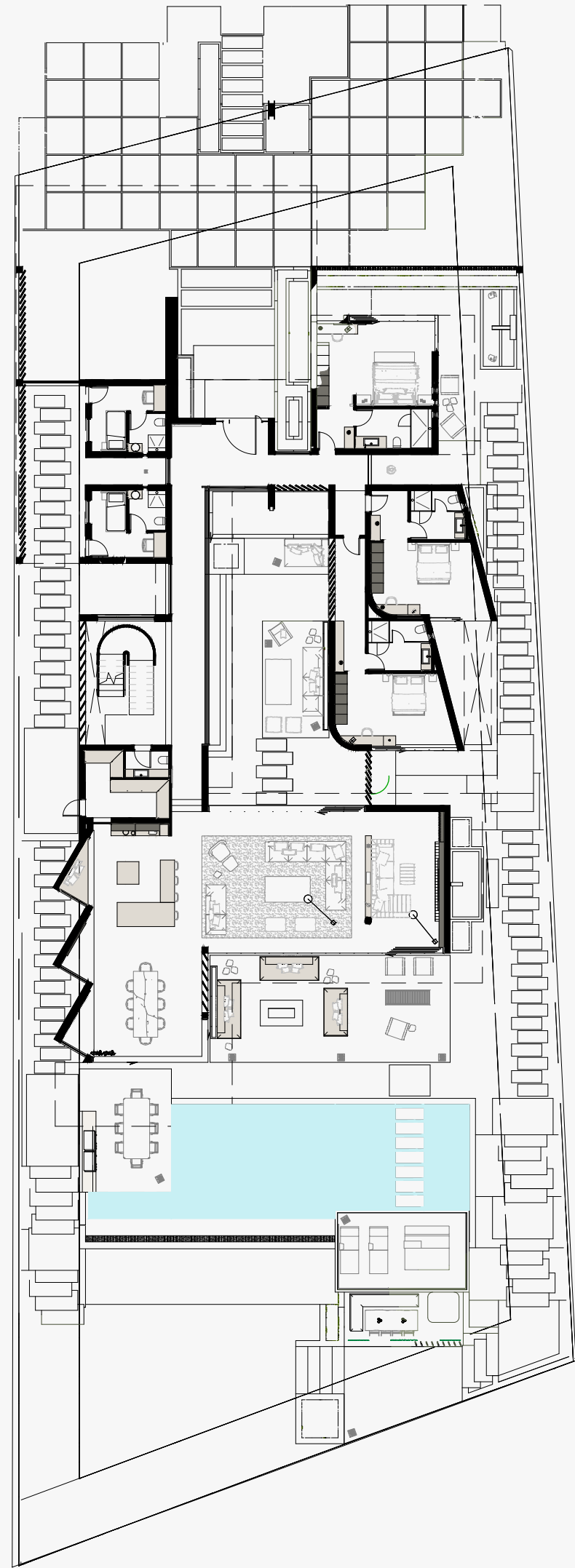


NAUTILUS / SOMABAY





**Grand Villa.**  
Ground Floor



**UNIT AREA**  
653.00m<sup>2</sup>

**RECEPTION**  
13.50×7.00

**KITCHEN & DINING**  
11.50×5.30

**GUEST BEDROOM**  
5.80×4.20

**BEDROOM 3**  
5.50×3.90

**BEDROOM 4**  
5.40×3.90

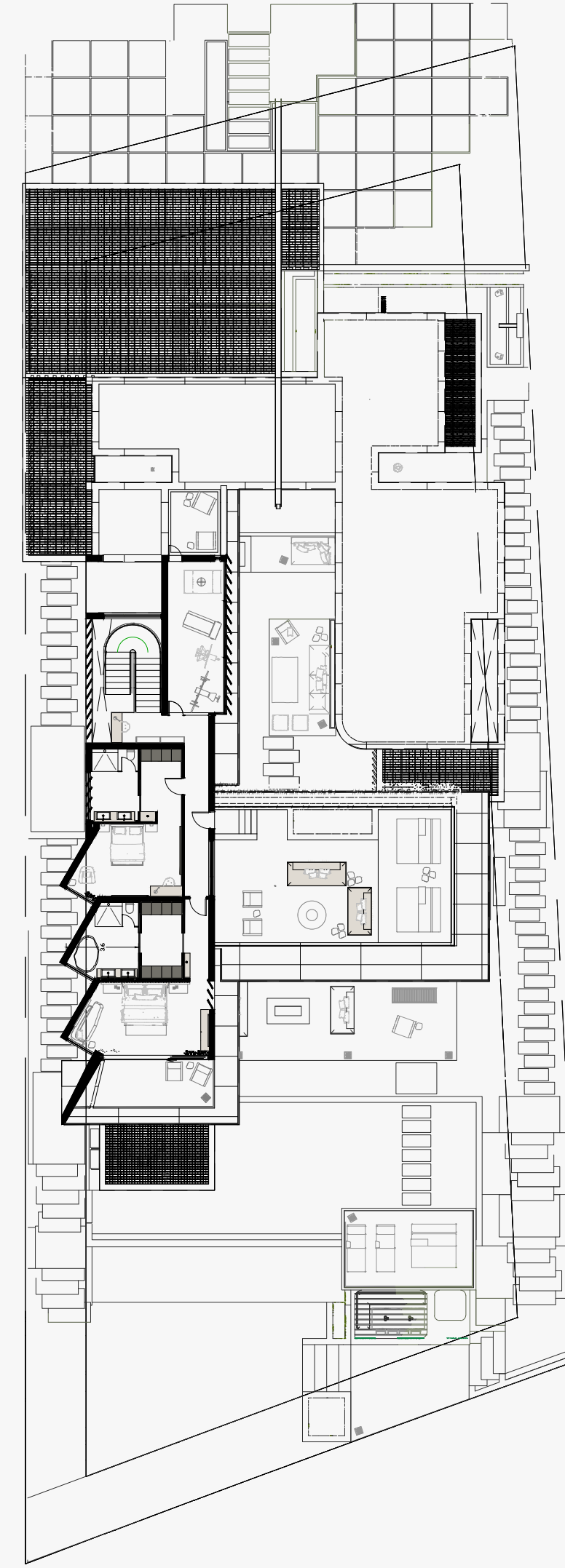
**LAUNDRY**  
3.00×2.60

**MAID'S ROOM**  
3.70×3.20

**DRIVER'S ROOM**  
3.70×3.30

**BATHROOM**  
3.00×2.60

**Grand Villa.**  
First Floor



**MASTER BEDROOM**  
7.00×3.80

**MASTER BATHROOM**  
7.00×3.80

**BEDROOM 2**  
5.70×3.60





# Nautilus Privé



# Nautilus Privé Villa.

**Disclaimer** 1. Drawings are not to scale. 2. The architectural details, dimensions and area in this plan are based on Schematic Design information only, and final As-Built conditions may vary. 3. All units are sold as unfurnished apartments, without furniture and furnishings, without white goods provisions, etc. 4. All images used are for illustrative purposes only and do not represent the actual size, features, specifications, fittings, and furnishings. 5. Somabay reserves the right to make revisions/alterations, at its absolute discretion, and without liability.





# Nautilus Privé Villa.

**Disclaimer** 1. Drawings are not to scale. 2. The architectural details, dimensions and area in this plan are based on Schematic Design information only, and final As-Built conditions may vary. 3. All units are sold as unfurnished apartments, without furniture and furnishings, without white goods provisions, etc. 4. All images used are for illustrative purposes only and do not represent the actual size, features, specifications, fittings, and furnishings. 5. Somabay reserves the right to make revisions/alterations, at its absolute discretion, and without liability.





# Nautilus Privé Villa.

**Disclaimer** 1. Drawings are not to scale. 2. The architectural details, dimensions and area in this plan are based on Schematic Design information only, and final As-Built conditions may vary. 3. All units are sold as unfurnished apartments, without furniture and furnishings, without white goods provisions, etc. 4. All images used are for illustrative purposes only and do not represent the actual size, features, specifications, fittings, and furnishings. 5. Somabay reserves the right to make revisions/alterations, at its absolute discretion, and without liability.







Nautilus Privé  
Villa.

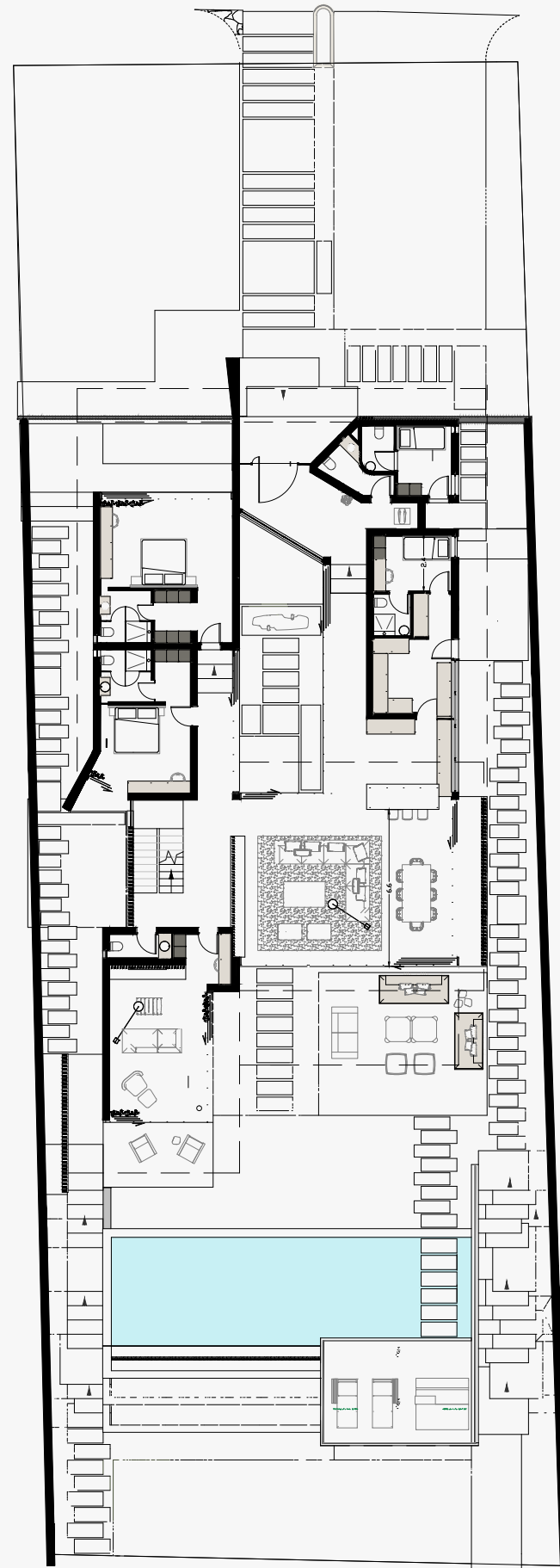


NAUTILUS / SOMABAY





Privé Villa.  
Ground Floor



UNIT AREA  
498.70m<sup>2</sup>

RECEPTION  
6.90 × 6.60

KITCHEN & DINING  
9.40 × 5.60

GUEST BEDROOM  
5.50 × 3.70

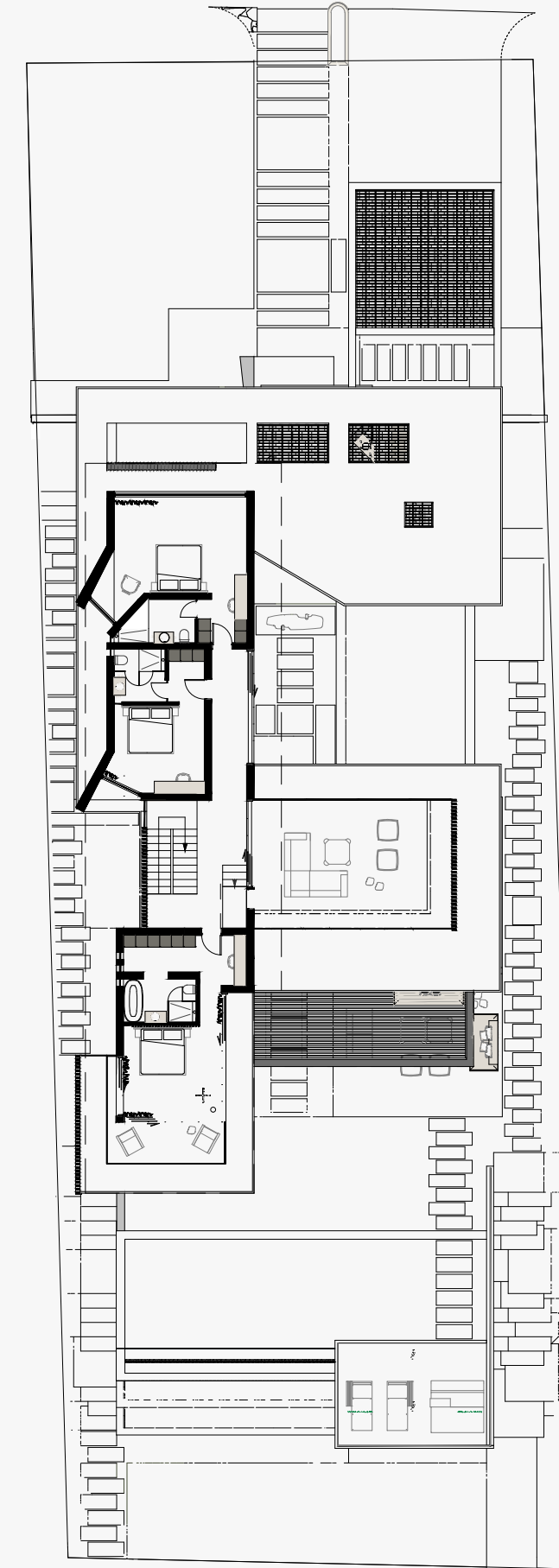
BEDROOM 2  
3.80 × 3.70

MAID'S ROOM  
3.30 × 2.40

DRIVER'S ROOM  
2.90 × 2.30

LAUNDRY  
3.30 × 3.10

Privé Villa.  
First Floor



MASTER BEDROOM  
4.10 × 3.80

MASTER BATHROOM  
3.60 × 3.00

BEDROOM 3  
5.50 × 4.00

BEDROOM 4  
3.80 × 3.70





# Nautilus Prime



# Nautilus Prime Villa Type 1.

**Disclaimer** 1. Drawings are not to scale. 2. The architectural details, dimensions and area in this plan are based on Schematic Design information only, and final As-Built conditions may vary. 3. All units are sold as unfurnished apartments, without furniture and furnishings, without white goods provisions, etc. 4. All images used are for illustrative purposes only and do not represent the actual size, features, specifications, fittings, and furnishings. 5. Somabay reserves the right to make revisions/alterations, at its absolute discretion, and without liability.





# Nautilus Prime Villa Type 1.

**Disclaimer** 1. Drawings are not to scale. 2. The architectural details, dimensions and area in this plan are based on Schematic Design information only, and final As-Built conditions may vary. 3. All units are sold as unfurnished apartments, without furniture and furnishings, without white goods provisions, etc. 4. All images used are for illustrative purposes only and do not represent the actual size, features, specifications, fittings, and furnishings. 5. Somabay reserves the right to make revisions/alterations, at its absolute discretion, and without liability.





# Nautilus Prime Villa Type 1.

**Disclaimer** 1. Drawings are not to scale. 2. The architectural details, dimensions and area in this plan are based on Schematic Design information only, and final As-Built conditions may vary. 3. All units are sold as unfurnished apartments, without furniture and furnishings, without white goods provisions, etc. 4. All images used are for illustrative purposes only and do not represent the actual size, features, specifications, fittings, and furnishings. 5. Somabay reserves the right to make revisions/alterations, at its absolute discretion, and without liability.







Nautilus Prime Villa  
Type 1.





**Prime Villa Type 1.**  
One Storey.



**UNIT AREA**  
309.50m<sup>2</sup>

**RECEPTION**  
7.30 × 6.90

**KITCHEN & DINING**  
9.40 × 3.80

**GUEST BEDROOM**  
4.10 × 3.30

**MASTER BEDROOM**  
4.50 × 3.30

**MASTER BATHROOM**  
3.70 × 3.60

**BEDROOM 1**  
3.90 × 3.40

**BEDROOM 2**  
3.90 × 3.10

**MAID'S ROOM**  
3.40 × 2.20

**LAUNDRY**  
3.00 × 1.90



# Nautilus Prime Villa Type 2.

**Disclaimer** 1. Drawings are not to scale. 2. The architectural details, dimensions and area in this plan are based on Schematic Design information only, and final As-Built conditions may vary. 3. All units are sold as unfurnished apartments, without furniture and furnishings, without white goods provisions, etc. 4. All images used are for illustrative purposes only and do not represent the actual size, features, specifications, fittings, and furnishings. 5. Somabay reserves the right to make revisions/alterations, at its absolute discretion, and without liability.





# Nautilus Prime Villa Type 2.

**Disclaimer** 1. Drawings are not to scale. 2. The architectural details, dimensions and area in this plan are based on Schematic Design information only, and final As-Built conditions may vary. 3. All units are sold as unfurnished apartments, without furniture and furnishings, without white goods provisions, etc. 4. All images used are for illustrative purposes only and do not represent the actual size, features, specifications, fittings, and furnishings. 5. Somabay reserves the right to make revisions/alterations, at its absolute discretion, and without liability.





# Nautilus Prime Villa Type 2.

**Disclaimer** 1. Drawings are not to scale. 2. The architectural details, dimensions and area in this plan are based on Schematic Design information only, and final As-Built conditions may vary. 3. All units are sold as unfurnished apartments, without furniture and furnishings, without white goods provisions, etc. 4. All images used are for illustrative purposes only and do not represent the actual size, features, specifications, fittings, and furnishings. 5. Somabay reserves the right to make revisions/alterations, at its absolute discretion, and without liability.







Nautilus Prime Villa  
Type 2.

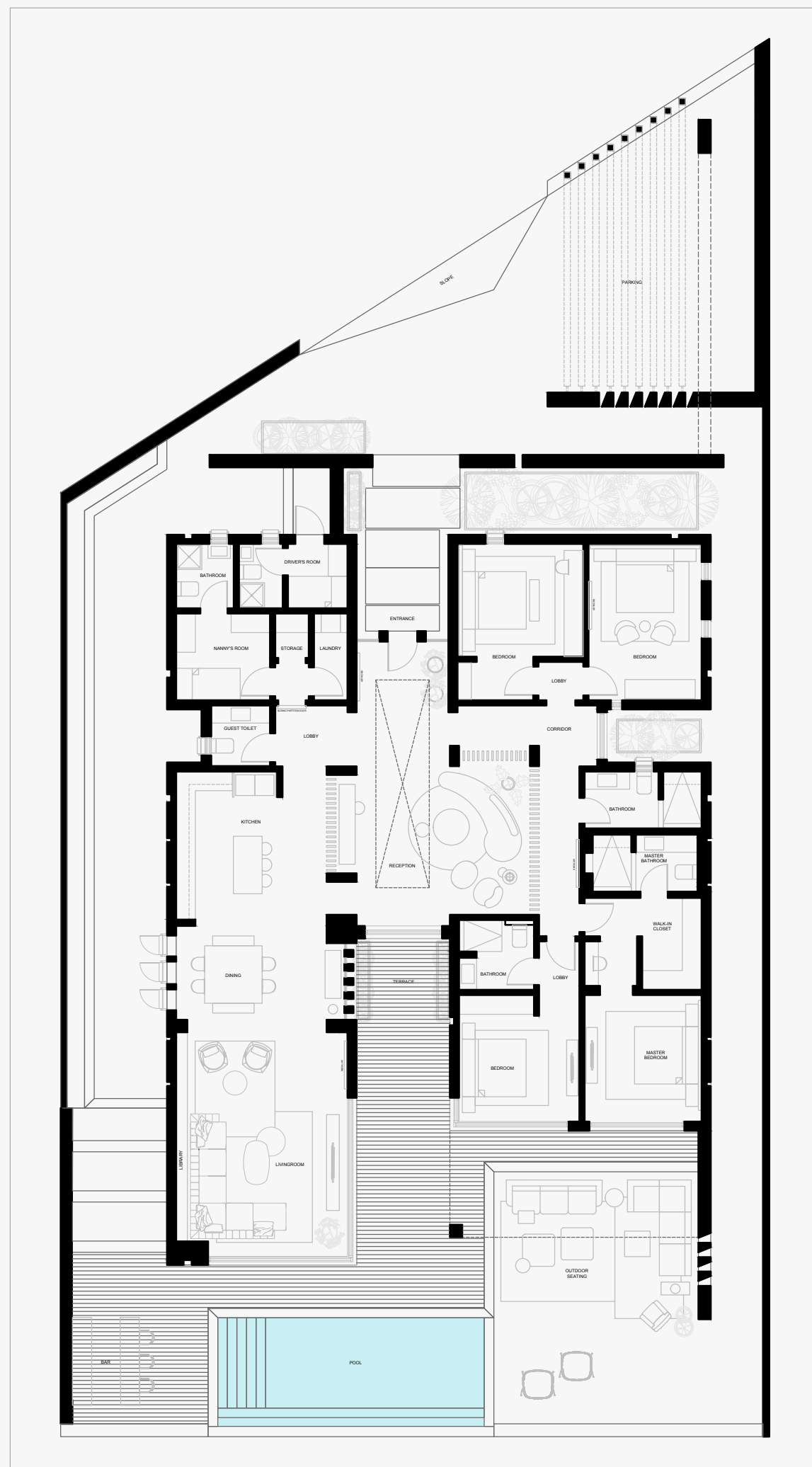


NAUTILUS / SOMABAY





Prime Villa Type 2.  
One Storey.



UNIT AREA  
308.05m<sup>2</sup>

RECEPTION & DINING

15.10 x 11.30

KITCHEN

4.60 x 3.10

GUEST BATHROOM

3.70 x 1.80

MASTER BEDROOM

7.00 x 3.70

MASTER BATHROOM

3.70 x 1.80

BEDROOM 1

6.20 x 3.80

BEDROOM 2

4.80 x 4.00

BEDROOM 3

4.80 x 3.50

MAID'S ROOM

4.80 x 2.90

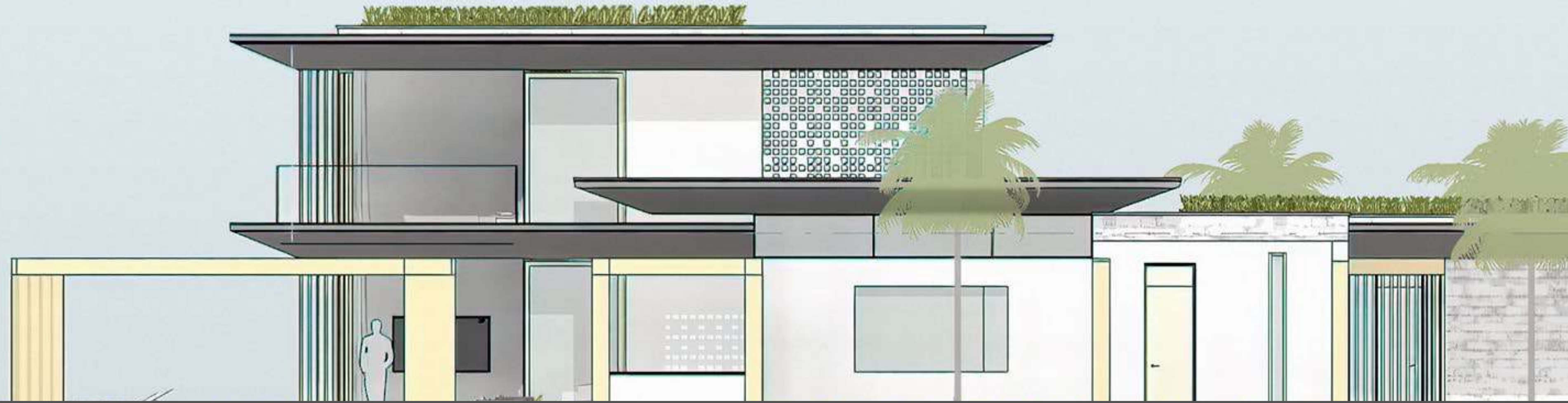
DRIVER'S ROOM

3.40 x 2.00

LAUNDRY

2.70 x 2.20





# Nautilus Signature



Nautilus Signature Villa  
Type 1.

Disclaimer 1. Drawings are not to scale. 2. The architectural details, dimensions and area in this plan are based on Schematic Design information only, and final As-Built conditions may vary. 3. All units are sold as unfurnished apartments, without furniture and furnishings, without white goods provisions, etc. 4. All images used are for illustrative purposes only and do not represent the actual size, features, specifications, fittings, and furnishings. 5. Somabay reserves the right to make revisions/alterations, at its absolute discretion, and without liability.





Nautilus Signature Villa  
Type 1.

Disclaimer 1. Drawings are not to scale. 2. The architectural details, dimensions and area in this plan are based on Schematic Design information only, and final As-Built conditions may vary. 3. All units are sold as unfurnished apartments, without furniture and furnishings, without white goods provisions, etc. 4. All images used are for illustrative purposes only and do not represent the actual size, features, specifications, fittings, and furnishings. 5. Somabay reserves the right to make revisions/alterations, at its absolute discretion, and without liability.





Nautilus Signature Villa  
Type 1.

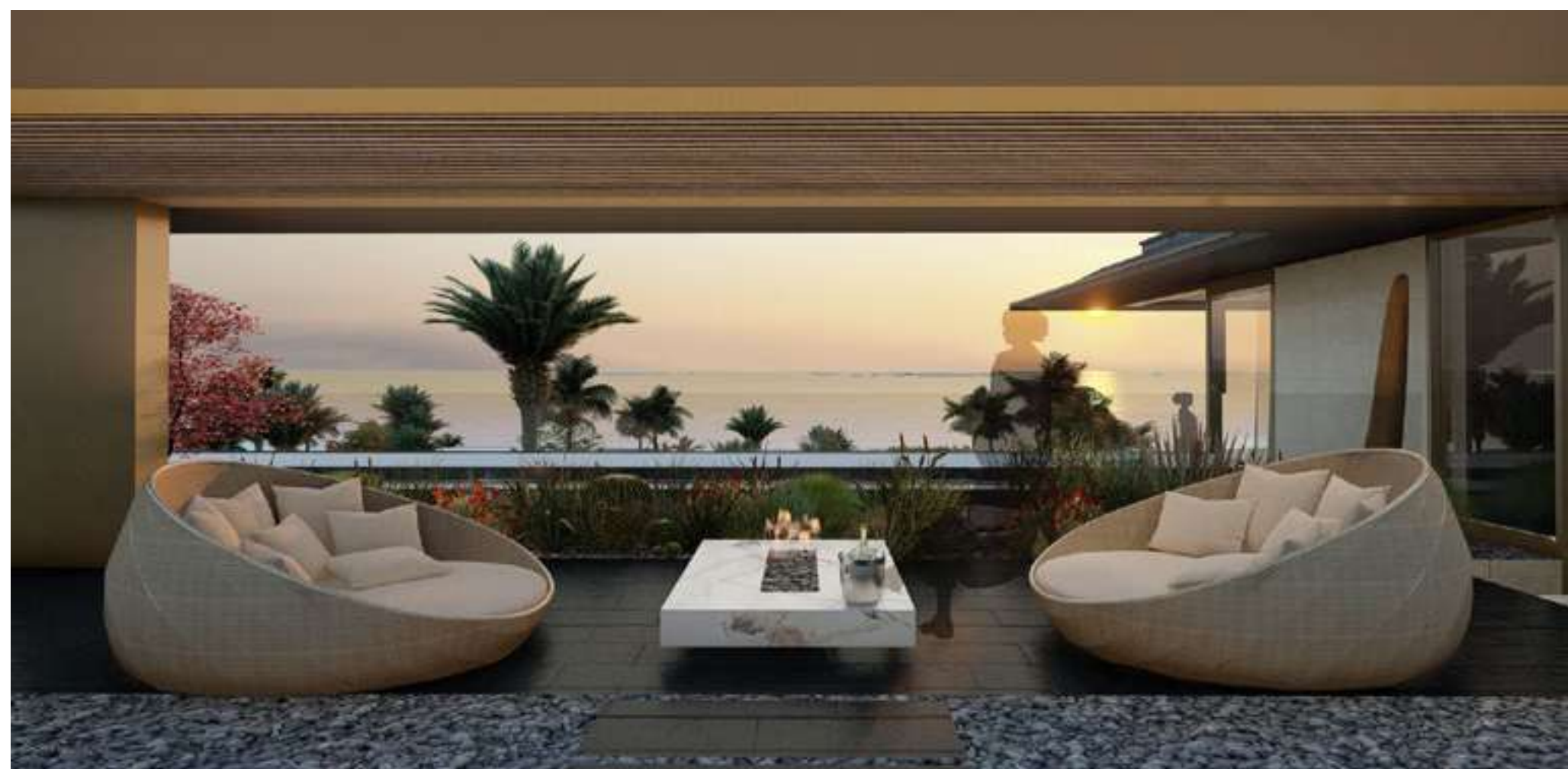
Disclaimer 1. Drawings are not to scale. 2. The architectural details, dimensions and area in this plan are based on Schematic Design information only, and final As-Built conditions may vary. 3. All units are sold as unfurnished apartments, without furniture and furnishings, without white goods provisions, etc. 4. All images used are for illustrative purposes only and do not represent the actual size, features, specifications, fittings, and furnishings. 5. Somabay reserves the right to make revisions/alterations, at its absolute discretion, and without liability.





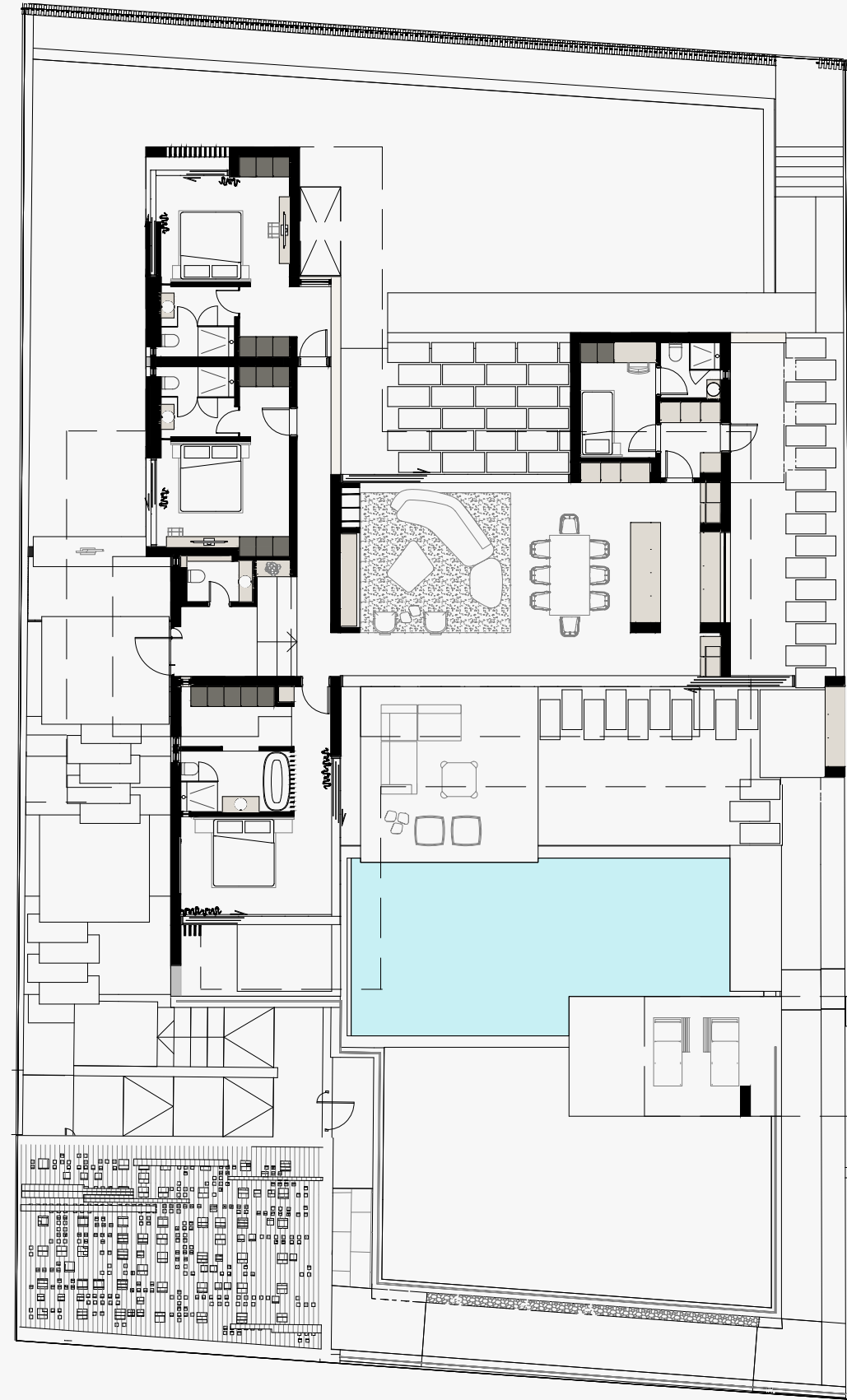


Nautilus Signature Villa  
Type 1Z.





Signature Villa Type 1.  
Ground Floor



UNIT AREA  
321.00m<sup>2</sup>

RECEPTION  
8.70×5.80

KITCHEN & DINING  
5.80×2.70

BEDROOM 1  
4.50×3.30

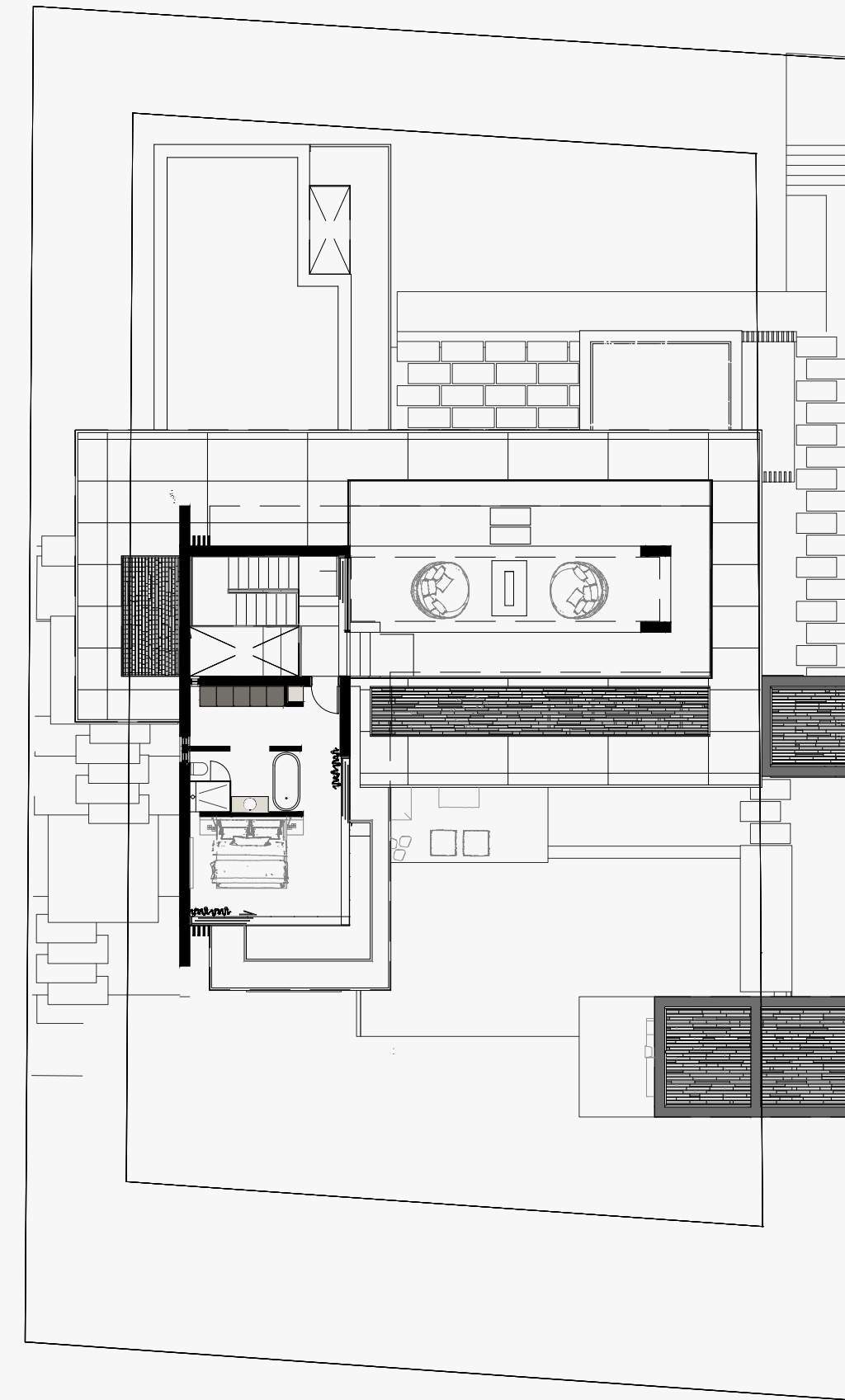
BEDROOM 2  
4.00×3.20

BEDROOM 3  
4.00×3.80

MAID'S ROOM  
3.50×2.30

LAUNDRY  
2.30×1.80

Signature Villa Type 1.  
Ground Floor



MASTER BEDROOM  
4.50×3.30

MASTER BATHROOM  
4.50×2.00



Nautilus Signature Villa  
Type 2.

Disclaimer 1. Drawings are not to scale. 2. The architectural details, dimensions and area in this plan are based on Schematic Design information only, and final As-Built conditions may vary. 3. All units are sold as unfurnished apartments, without furniture and furnishings, without white goods provisions, etc. 4. All images used are for illustrative purposes only and do not represent the actual size, features, specifications, fittings, and furnishings. 5. Somabay reserves the right to make revisions/alterations, at its absolute discretion, and without liability.





Nautilus Signature Villa  
Type 2.

Disclaimer 1. Drawings are not to scale. 2. The architectural details, dimensions and area in this plan are based on Schematic Design information only, and final As-Built conditions may vary. 3. All units are sold as unfurnished apartments, without furniture and furnishings, without white goods provisions, etc. 4. All images used are for illustrative purposes only and do not represent the actual size, features, specifications, fittings, and furnishings. 5. Somabay reserves the right to make revisions/alterations, at its absolute discretion, and without liability.





Nautilus Signature Villa  
Type 2.

Disclaimer 1. Drawings are not to scale. 2. The architectural details, dimensions and area in this plan are based on Schematic Design information only, and final As-Built conditions may vary. 3. All units are sold as unfurnished apartments, without furniture and furnishings, without white goods provisions, etc. 4. All images used are for illustrative purposes only and do not represent the actual size, features, specifications, fittings, and furnishings. 5. Somabay reserves the right to make revisions/alterations, at its absolute discretion, and without liability.







Nautilus Signature Villa  
Type 2.

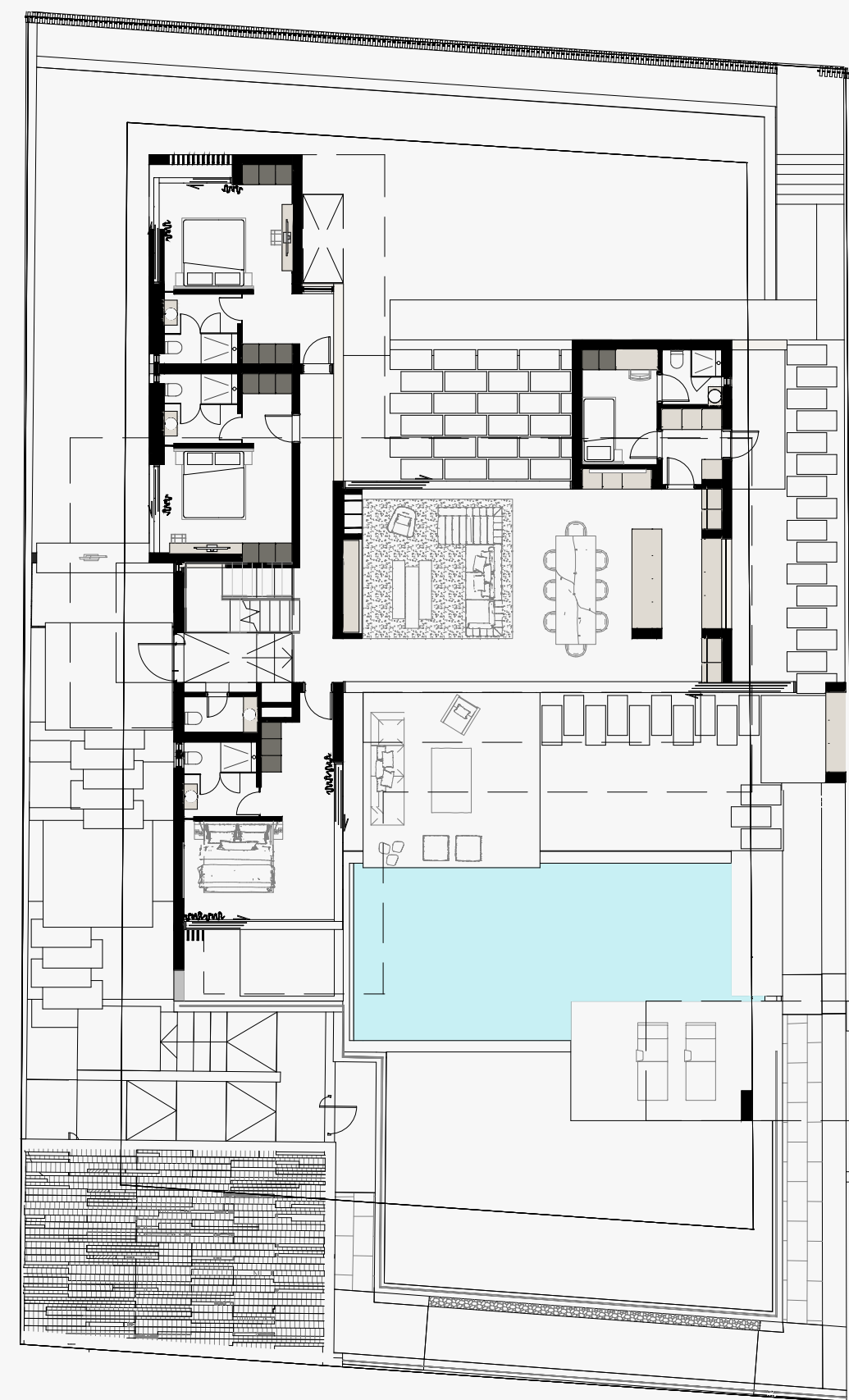


/SOMABAY





**Signature Villa Type 2.**  
One Storey



**UNIT AREA**  
271.40m<sup>2</sup>

**RECEPTION**  
8.70×5.80

**KITCHEN & DINING**  
5.80×2.70

**BEDROOM 1**  
4.50×3.30

**BEDROOM 2**  
4.00×3.20

**BEDROOM 3**  
4.00×3.80

**MAID'S ROOM**  
3.50×2.30

**LAUNDRY**  
2.30×1.80



# The Somabay

An aerial photograph of a pod of dolphins swimming in clear, turquoise water. The dolphins are dark grey and are scattered across the frame, with a central group appearing to be in a playful or social interaction, creating white splashes. The water's color transitions from a deep blue on the left to a lighter, almost white-blue on the right, suggesting a shallow or sandy seabed.

Start your day by teeing off at The Cascades Championship Golf Course then unwind at the award winning Cascades Spa and Thalasso and allow the healing powers of the Red Sea to restore balance to your body and soul.

For the more adventurous, ORCA Dive Centre invites you to uncover the untapped wonders of Egypt's marine life at the site's colorful House Reef. Kite-surfing lovers can spend a serene afternoon gliding across

flat waters at 7Bft—one of the top 3 kite-surfing spots in the world—followed by a world-class dining experience at any of the destination's signature restaurants. Blessed with dry desert winds, low humidity and a front-row seat on immaculate sea views, Somabay dictates an exciting itinerary for the whole family, transforming your everyday reality into a waking dream.

# Experience.



## THE SOMABAY CHAMPIONSHIP GOLF COURSE.

Opening onto spectacular 360 degree views of lush golf greens, azure Red Sea hues and earthy desert tones, The Somabay 18 hole, par 72 Championship Golf Course is designed by legendary golfer Gary Player to ignite guests' love for the sport. Ranked as one of the leading golf courses in Africa, The Somabay Championship Golf Course boasts a state-of-the-art academy, guaranteeing non-stop excitement for amateurs and professionals alike.





# SOMABAY MARINA.

Somabay's comprehensive Marina is a peaceful haven for immaculate sea views and a unique location for nautical fans wishing to dock their boats at a competitive price. Boasting world-class services and conditions for mooring, the Marina offers a wide array of quality services and facilities directly available at quayside, so you can enjoy sailing smoothly through life.





# SOMABAY HOSPITALITY

Somabay opens your eyes on a variety of hospitality options to suit every need. From design-led hotels to budget accommodation with impeccable service, the destination guarantees a memorable stay, as well as signature treatment all year.

Kempinski Somabay  
The Cascades  
Sheraton Somabay

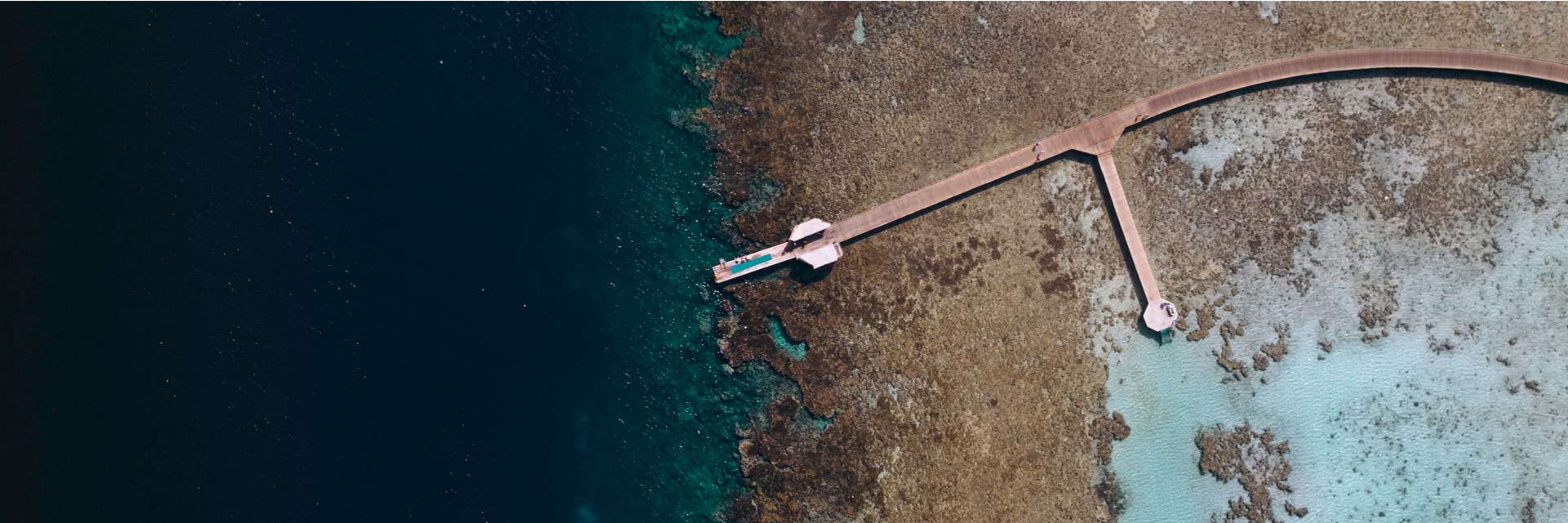
Robinson Club  
The Breakers





# SOMABAY HOSPITALITY

Extending into the depth of the bay, Somabay's Jetty is the perfect spot to take in panoramic views of azure waters while enjoying a brisk walk to admire memorable sunsets, perfected by ultimate peace of mind

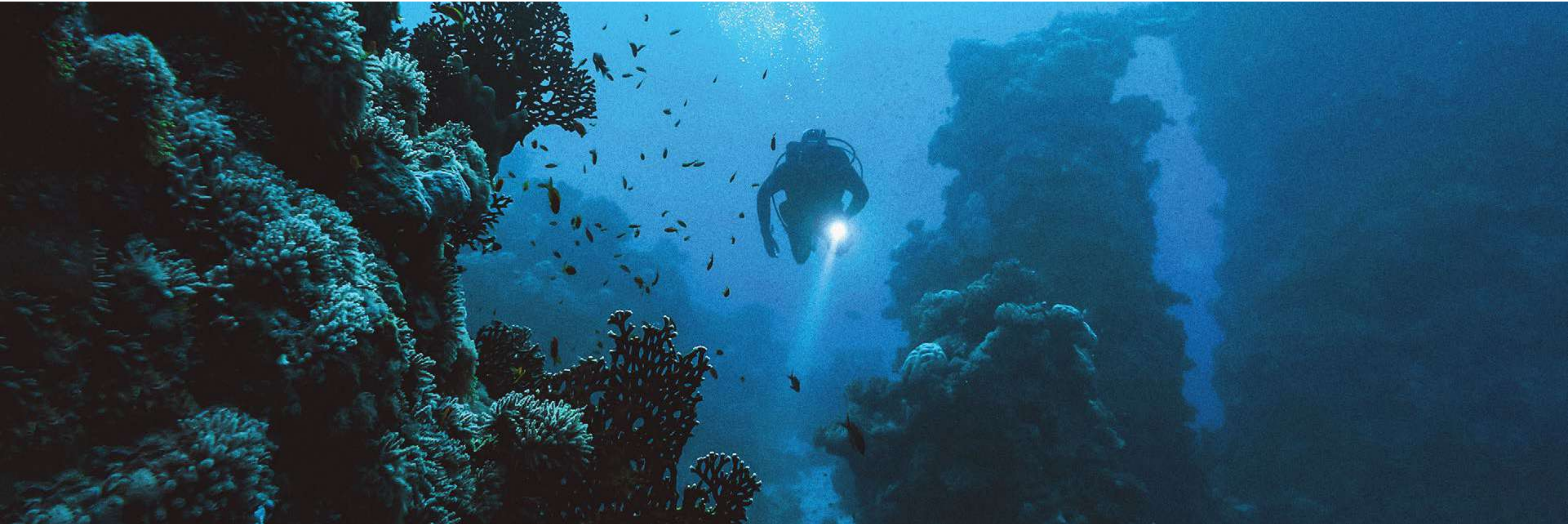




## ORCA DIVE CENTER.

Escape for hours at sea with Orca Dive Center and allow Somabay's captivating dive sites and renowned colorful House Reef to leave you in awe.

Ideal for beginners and advanced divers alike, our purpose-built diving center is one of the largest and most well-equipped in the Red Sea, led by an international team of instructors who ensure you explore a treasure trove of wonders with safety and ease.





## SOMABAY PROMENADE.

Masterplanned with walkability in mind, Somabay's promenade is a daily invitation to jog, cycle or simply walk while taking in magical views of the tranquil bay. Stretching across the project to re-define the ultimate in interconnectivity, the promenade allows for safe and seamless access to any point of the project on foot or bike without having to worry about cars.





## THE CASCADES SPA & THALASSO.

Luxury award winner 'The Cascades Spa & Thalasso' invites you to uncover the most exquisite spa experience in the Middle East. Rolling out on 7,500 m<sup>2</sup>, the spa is an oasis of calm, crowning a front-row seat on the Red Sea's pristine coastline while boasting 65 treatment rooms spanning traditional massages, beauty treatments, hydrotherapy and aesthetic procedures. Take a plunge in our 830 m<sup>2</sup> Thalasso-Tonic hydrotherapy pool and allow the wonders of the Red Sea to restore balance to your mind, body and soul.





## 7 BFT THE KITE HOUSE.

Spend your day gliding across flat idyllic waters at one of the top 3 Kite Surfing spots in the world, offering 365 days of incomparable wind and natural beauty to inspire. Opening onto a tranquil bay, Somabay embraces pristine beaches and perfect off-shore and side-shore winds ranging from 4 to 8 Bft.





## SOMA SPORTS ARENA.

Whether you're an amateur or a professional athlete, Somabay's Sports Arena is everything you need to get moving. Boasting state-of-the-art courts and work out equipment of all sorts, the sports arena allows residents to energize or re-charge while enjoy bay front views.





# STAYR

Stayr is a holistic luxury serviced apartment and concierge concept, offering exclusive rentals in prime locations across Somabay to transform your property into a first-class serviced vacation home that will live up to your standards, as well as your guests.





16390

[somabay.com](http://somabay.com)

[info@somabayrealestate.com](mailto:info@somabayrealestate.com)

**Head Office**

4A Hassan Sabry ST. Zamalek, Cairo, Egypt

**Discover Somabay**

Capital Business Park - Ground Floor, Sheikh Zayed, Giza, Egypt.

**Sales Office**

Capital Business Park - Building B4 - 26<sup>th</sup> of July Corridor,  
1<sup>st</sup> Floor Sheikh Zayed, Giza, Egypt.





SOMABAY